



LOUNGE/DINER 21'0 x 11'9 (6.40m x 3.58m)
 Vinyl clad flooring. Feature fireplace housing electric fire. Under stairs cupboard. Windows to front and rear aspects. Double doors to garden.

KITCHEN 14'1 x 7'3 (4.29m x 2.13m/0.91m)
 Range of wall, base and drawer units with worktops over. Space for washing machine, under-counter fridge/freezer and cooker. Extractor fan. Boiler housed in cupboard. Windows to side and rear aspects. Door to garden.

LANDING 7'5 x 3'2 (2.26m x 0.97m)
 Fitted carpet. Loft access.

BEDROOM 1 11'7 x 9'7 (3.53m x 2.92m)
 Fitted carpet. Built-in wardrobes. Radiator. Window to front aspect.

BEDROOM 2 9'1 x 6'11 (2.77m x 2.11m)
 Fitted carpet. Radiator. Window to rear aspect.

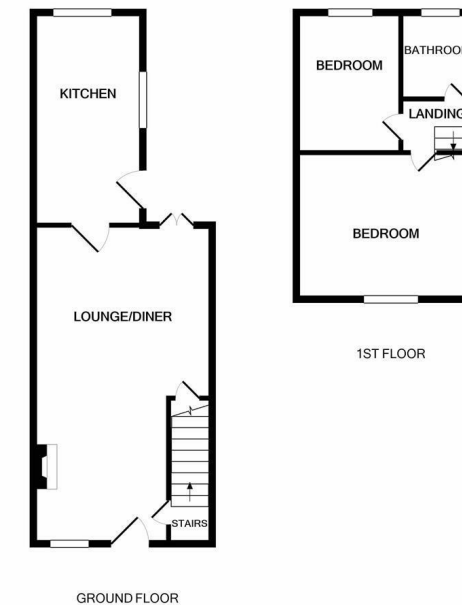
BATHROOM 7'4 x 5'7 (2.24m x 1.70m)
 Three piece suite comprising bath with electric shower over, wash hand basin and w.c. Heated towel rail. Vinyl flooring. Tiled wall around bath.

FRONT GARDEN
 Laid to shingle with pathway leading to front door.

REAR GARDEN
 Mainly laid to lawn with flower beds to the side, patio area and summer house. Shingled area for parking.



We are delighted to offer this beautifully presented two bedroom mid terrace Victorian cottage with parking and rear garden in the desirable village of Dersingham. The cottage offers a wealth of character and is located in a set back position in Centre Vale. The property benefits from gas central heating and uPVC double glazing. The accommodation is arranged over two floors comprising a lounge/diner with feature fireplace housing electric fire, and kitchen on the ground floor with two cottage style bedrooms and bathroom on the first floor. The front garden is laid to shingle with pathway leading to front door. The rear garden is mainly laid to lawn with flower beds to the side, patio area and summer house. Shingled area for parking.



Whilst every attempt has been made to ensure the accuracy of the floor plan contained here, measurements of doors, windows, rooms and any other items are approximate and no responsibility is taken for any error, omission, or mis-statement. This plan is for illustrative purposes only and should be used as such by any prospective purchaser. The services, systems and appliances shown have not been tested and no guarantee as to their operability or efficiency can be given.
 Made with Metropix ©2021



